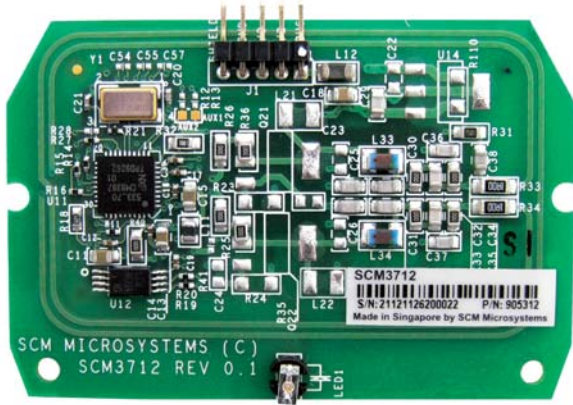




SCM 3712

Contactless Reader Board



■ COMPACT

Size optimized for space constraint equipment

■ COMPLIANT

ISO 14443 A/B, FeliCa, NFC Reader/Writer Mode and Peer-To-Peer mode. Full feature support of various contactless tags and NFC devices

■ FAST

Optimized transaction times for highest throughput

■ SIMPLE INTEGRATION

PC/SC standards-compliant driver for Windows®, Linux and MAC

■ FLEXIBLE

Configuration options for various use applications

Typical Applications

Event ticketing, retail loyalty as well as vending, public transport and mobile payment are a wide range of NFC based applications the SCM3712 is suitable for. Especially the combination of contactless reader and NFC peer-to-peer capability enables the upgrade of actual RFID use applications to a whole variety of fully NFC featured commercial solutions.

For example, a direct and reliable two-way communication between two devices can be established, allowing a mobile phone to be used as a smart credential when presented to an SCM3712 powered NFC terminal. Additionally it is enabling applications such as loyalty couponing or point redemption. For a maximum end user acceptance the SCM3712 reader board family fully supports the features of a wide range of contactless cards, tokens, key fobs and NFC devices like mobile phone stickers, NFC labels or NFC powered smart phones.

The SCM3712 EA version even enables the use in issuing devices like card or label/smart poster printers for on-the-fly tag personalization. The SCM3712 family also works with SCM's widely installed contactless SCL reader/token family, including the SCL011 and SCL3711 devices. Solution developers and system integrators easily can reuse and expand existing integrations based on other SCM products.

The available NFC solutions development kit containing the SCM3712 NFC reader board enables application developers and system integrators to accelerate time to market of NFC technology-based readers and terminals that support device-to-tag and peer-to-peer applications.





SCM 3712

Contactless Reader Board

Technical Data

Parameter	Value / Description		
	SCM3712	SCM3712 NFC	SCM3712 EA
Order Number	905254	905312	905260
RF Carrier Frequency	13.56MHz ± 50 ppm		
Supported Standards	ISO 14443 A/B, NFC IP-1, ISO 18092, ECMA 340		
Supported RF transmission speeds	106 / 212 / 424 kbps		
Supported Tag ICs	NFC forum tag type 1 through SCM-specific APDU NFC forum tag type 2 through PC/SC-defined APDUs NFC forum tag type 3 through SCM-specific APDU NFC forum tag type 4 through PC/SC APDUs ISO/IEC 14443-4 PICC type A and type B MIFARE (Classic, Ultralight, Ultralight C, MIFARE PLUS , DESFire, DESFire EV1 2/4/8k), Non-Secure FeliCa™, Innovision Topaz		
Supported NFC Modes	Reader Writer Mode	Reader Writer Mode Peer to Peer Passive	Reader Writer Mode Peer to Peer Passive
Host Interface	USB 2.0 (USB 1.1 / 3.0 compliant), 150cm / 59 Inch USB cable, Type A connector		
Host Communication Speed	12 Mbps (USB2.0 full speed)		
Host OS Support	Microsoft Windows® 2000/XP/Vista/7 (32/64Bit) / Microsoft Windows® CE 5.0/6.0 / MacOS, Linux		
Host Communication Driver	PC/SC 2.01.09		
Indicator	Green LED		
Power Supply	USB Bus powered		
Power Consumption	<200mA 260µA Power down mode	<100mA 260µA Power down mode	<100mA 260µA Power down mode
Reading Distance	< 50 mm / < 1.97 Inch depending on tag type and size	< 45 mm / < 1.77 Inch depending on tag type and size	< 65 mm / < 2.56 Inch depending on tag type and size
Reader PCB Size	60 x 40.3 x 10 mm ± 0.13mm / 2,36 x 1.59 x 0,39 Inch ± 0.005 Inch		
Antenna PCB Size	integrated	integrated	92.7 x 49.5 x 4 mm 3.65 x 1.95 x 0.16 Inch
Antenna Cable Length	NA	NA	200 mm / 7.87 Inch
Antenna Connector	NA	NA	ULTRA MINI COAX
Weight	5.5 g ± 5% / 0,012 lb ± 5%	5.5 g ± 5% / 0,012 lb ± 5%	19.5 g ± 5% / 0.043 lb ± 5%
Operating Temperature Range	0° to +60°C / +32 to +140 F		
Storage Temperature Range	-20 to +60°C / -4 to +140 F		
Operating humidity range	Up to 95%RH non condensing		
Firmware Version	2.7		
Certifications / Compliances	WHQL, RoHs compliant		

Technical data are subject to change without notice

Contact			
Headquarters	USA	Japan	Hong Kong
SCM Microsystems GmbH Oskar-Messter-Str. 13 85737 Ismaning Germany	SCM Microsystems - an Identive Group Inc. Company 1900-B Carnegie Avenue Santa Ana, CA 92705 USA	SCM Microsystems Japan, Inc. GoogolPlex Millennium Building 6F 4-4-20 Shiba, Minato-ku, Tokyo, 108-0014, Japan	SCM Microsystems GmbH Unit 11, 4607-11, The CENTRE 99 Queen's Road Central Hong Kong
E-mail sales@scmmicro.com	E-mail scmsales@scmmicro.com	E-mail sales@scmmicro.co.jp	E-mail sales@scmmicro.co.in
Phone + 49 89 9595 5000 Fax + 49 89 9595 5555	Phone + 1 888 446 9008 Fax + 1 888 446 1210	Phone + 81 3 6414 6611 Fax + 81 3 6414 6612	Phone + 91 44 2254 0020 Fax + 91 44 2254 0029